

UPCOMING
EVENTS

- June 14 Regular Session Board Meeting 7:00pm— Headquarters
- June 8 JCMOFA Board Meeting 7:00 pm— Station 5

June
TRAININGS
Relay Pumping

- 2: Stations 2,3,9 at Station 2 7pm
- 7: Station 6 7pm
- 9: Station 4 7pm
- 16: Station 5 7pm
- 21: Stations 7 & 8 at Station 7 7pm
- 23: Station 10 7pm
- 28: Station 1 7pm

**OTHER
TRAININGS/
MEETINGS**

- 4: Make-up Training at HQ 8am & 10am
- 18: Recruit Training at HQ 8am
- 25: Recruit Training Live Training at HQ 8am

District Dispatch

A publication of the Johnson County Fire Protection District

VOLUME 3, ISSUE 6

JUNE 2011

Responding to Devastating Events

By the simple fact that you volunteer your time to be a part of the District you no doubt have the willingness to help others, beyond our District's borders, when the need arises. We all generally participate in mutual aid responses where we assist our neighboring agencies primarily with structure fires or maybe water rescue related events. What happens though when something outside of the norm and possibly so devastating that it hits the national airwaves takes place? What happens if something "bad" happens here?

Recent events in Joplin, Missouri point out just how quickly a major issue can be placed on your doorstep. In the not too distant past almost the entire town of Greensburg, Kansas was demolished, again demonstrating the sometimes violent results from a natural disaster. Other calamities can take place that are just as devastating and not always weather related and we should all stand ready to do what we can to assist WHEN REQUESTED.

The previous two words are critical when dealing with a large scale disaster of any kind. One of the worst things that is cited in almost every critique of a large scale disaster is the influx of people, obviously with good intentions, that just show up to "help". These people range from trained professionals to those that have no training and operate with only a limited understanding of what needs to take place. Management of resources becomes and instant nightmare for the local authorities who were already dealing with the disaster to start with. For this reason and to help facilitate proper allocation of resources a long time system has been in place in Missouri.

The State Wide Fire Mutual Aid system was adopted many years ago, receives constant re-

view and revision and is utilized for disasters and large scale fires. The system works smoothly and is put into action by request of the local authorities. The system contains information about resources that are available throughout the state so that at a moment's notice the correct resources can be matched to the specific request and then are deployed to the affected area. These resources range from trained personnel to highly sophisticated and costly equipment. Regional coordinators contact local agencies like ours to request specific assistance and we, the leadership of the District, will in turn contact you to assist on an as needed basis. When people "self-deploy" outside the spectrum of the mutual aid system then accountability and management of resources becomes problematic adding unnecessary confusion and other complications which can impede the success of the mission at hand.

Listening to the local authorities off and on during the early hours following the recent Joplin tornado strike it became evident from the radio traffic that the local authorities had made specific requests for assistance from the emergency services disciplines. During the radio transmissions it became evident in the comments and tone of voice that they were also receiving many "self-deployed" civilian and emergency services personnel who may have been adding to the problem more than becoming a part of the solution. In the end help is always welcome at any large disaster, but organized and trained help simply makes the process move more smoothly.



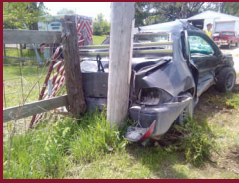
Continued on page 2

Procedure Reminder...

It sounds exciting...I want to go!

Keeping with the theme of assisting others let's review the District's Guideline G2000-003: Mutual Aid Responses. Mutual aid requests within our county for one initial station are honored directly by Dispatch and the requested units are dispatched. For the next requested equipment or manpower Dispatch will contact the Chief, Assistant Chief or their designee to request authority to dispatch additional resources. This is done in part because we still have a primary responsibility to be able to respond to incidents within our territory so we have to be cautious about how many resources we commit to other agencies within our county.

Request for assistance for out-of-county responses all must be referred for dispatching authority. Just because some kind of request has been received it does not always mean it is a valid request or that we can afford to send our resources out of our general operating area at that particular time. In all cases we request that our personnel refrain from "self-dispatching or self-deploying" to any mutual aid request. If you respond without us knowing, that simply depletes our resources that we generally count on for responses. Additionally if you respond and have no authorization you are operating outside the scope of your employment and it is highly likely you will not be afforded coverage from any of our standing insurance policies or workman's compensation. Review the guide as it provides additional information concerning handling of requests and responses.



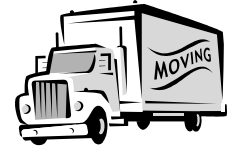
5/7/11
Station 3 responds to a t-bone MVA

*"By mutual confidence and mutual aid - great deeds are done and great discoveries made."
Homer*

4/5/11
Station 9 and Station 1 personnel assist in loading a patient from an MVA into a waiting air ambulance.



Have You Moved?



REMEMBER—If you have moved or are planning on moving, please contact the Admin Office and update your address. Lots of District correspondence is sent via mail and if we can't find you, you aren't receiving important information!

RESPONDING continued

So what do you do when you hear about something devastating like the terrorist attacks on 9/11, the tornado in Joplin, spreading wild land fires through the Ozarks or other similar events? Resist the temptation to "self-deploy", wait until a request has been made by the local authorities and not the all too common "send everything you can" request that many "news" stations throw out with no real authority or "plan" for coordinating the beast they may have just unleashed.

What happens if this type of event happens in our area? First and foremost you need to take care of your own family and yourself. Ideally every one of our members would be able to report to the station and answer emergency calls throughout our area, but reality is that this simply is not going to happen. On the flip side we also expect that you make yourself available as quickly and safely as you can so you can help render aid to those people you have agreed to serve when you became a member of the District. Keep in mind that we do operate with an incident command system and during a major event following that system will help us reach a successful end to our immediate mission. Remember also that in these types of events a coordinated request will be made requesting the appropriate outside resources so you will need to make sure those in command are aware of specific needs you may have. Just remember – be safe, prepared and aware.



BRIDGE REPLACEMENT ADVISORY

PP Hwy over Clear Creek beginning June 6 for approx. two months.

